



THE
SHELDON
Arts Without Borders

SEASON
2024-2025

Dear Friends of The Sheldon,

As we celebrate our 35th year as an arts foundation, we look forward to our new season with great appreciation for our past and for all who have supported us throughout the decades. Our subscribers, patrons and donors have made it possible for us to expand our offerings in our concert hall and in our galleries, and this new season reflects that expansion.

We are excited to bring you a season featuring icons as well as up-and-comers. From the iconic and ever-evolving music of greats such as Grammy-winning singer-songwriter Suzanne Vega, recent Grammy winners The War and Treaty, acclaimed jazz artist Joshua Redman and St. Louis's own Peter Martin and the beloved Martin Sexton's Abbey Road Show, to trail-blazing stars like Martha Redbone, Latin great Lila Downs, fado great and featured artist in the Oscar-nominated "Poor Things" Carminho, and the return of the phenomenal St. Louis Symphony Orchestra: Live at The Sheldon, a chamber series curated and performed by SLSO musicians for a remarkable season that promises a year-long exploration of creativity and joy.

*For over 100 years, our
breathtaking spaces
have made "arts lover"
an accessible role to all.*

A gathering place at its heart, the Sheldon invites everyone to connect with and participate in a diverse history of live music, arts and culture — including you! Here, all are welcomed into an inclusive pocket of creativity, where the line between stage and audience is a seamless, seasoned St. Louis treasure.

This season — and throughout the years to come — we will continue to provide you with moments that are profound and personal. With radical hospitality, we hope to make you feel as welcome and comfortable as possible. On behalf of The Sheldon, we promise to give you

Arts Without Borders

On with the show!



Peter Palermo
Executive Director, The Sheldon

Subscribe Now & Enjoy the Benefits

- Get the same great seat for every concert
- Get the opportunity to purchase single tickets for all our shows prior to public sale
- Receive advance notice of added shows, special pre-sales and discount offers throughout the season
- Forget or lose your ticket? Don't worry! As a subscriber, a pass will be issued for your regular seats

Connect With Us

 @thesheldon  @sheldonstl

 @sheldonstl

TheSheldon.org

SUBSCRIPTION PRICE

\$215 ORCHESTRA / \$195 BALCONY

All prices include a \$1 per ticket historic preservation fee.

SHELDON

Folk & American Roots

ALL SHOWS AT 8 PM

MAR 21, 2025

An Evening with Suzanne Vega

Widely regarded as one of the foremost songwriters of her generation, GRAMMY-winning singer-songwriter Suzanne Vega returns to The Sheldon. Since her critically acclaimed 1985 debut album, she has been known for performances that convey deep emotion, with NPR Music noting that she "has been making vital, inventive music" throughout the course of her decades-long career. Notably succinct and understated, her work is immediately recognizable, as utterly distinct and thoughtful as it was when her voice was first heard on the radio over 30 years ago.

\$56 ORCHESTRA / \$50 BALCONY 1 / \$46 BALCONY 2



The War and Treaty

Founded in 2014 by the husband-and-wife duo Michael Trotter Jr. and Tanya Trotter, The War And Treaty has emerged as one of the most electrifying new acts in American music, recently earning their first GRAMMY nominations for Best New Artist and Best American Roots Song for "Blank Page." They also received this year their first Duo of the Year nomination from the Country Music Association, as well as recognitions from the Academy of Country Music, Country Music Hall of Fame, the Rock & Roll Hall of Fame, the Grand Ole Opry and the Americana Music Association.

\$49 ORCHESTRA / \$41 BALCONY 1 / \$35 BALCONY 2



Martha Redbone

Martha Redbone is a vocalist, songwriter, composer and educator of African American, Cherokee, and Choctaw descent. A multi-award-winning musician, Redbone broadens the boundaries of American Roots music with songs and storytelling that share her life experience as a Black and Native American woman and mother navigating in the new millennium. Martha works in partnership with longtime collaborator/husband Aaron Whitby. Their works give voice to issues of social justice, connecting cultures and celebrating the human spirit.

\$41 ORCHESTRA / \$36 BALCONY 1 / \$31 BALCONY 2



Mark O'Connor: An Appalachian Christmas

Three-time GRAMMY-winning composer and fiddler Mark O'Connor has created several arrangements of Christmas classics and fashions a wondrous mixture of both instrumental and vocal music in bluegrass and other American music genres. Concert goers are treated to fresh takes on traditional songs with a few original compositions. O'Connor's touring ensemble includes his wife, Maggie O'Connor, on fiddle and vocals, as well as a variety of guest musicians.

\$51 ORCHESTRA / \$46 BALCONY 1 / \$41 BALCONY 2



The Martin Sexton Abbey Road Show

Martin Sexton puts his signature style on his rendition of this iconic Beatles album combining what Rolling Stone calls his "soul-marinated voice" with his inventive guitar prowess. We are all invited to "come together" to experience these brilliant songs celebrated in a compelling, reimagined way. Headlining venues from The Fillmore to Carnegie Hall, Martin Sexton has influenced a generation of contemporary artists. Sexton's stated mission continues to be unity through music with a commitment to sharing peace and harmony through song.

\$46 ORCHESTRA / \$41 BALCONY 1 / \$36 BALCONY 2

SUBSCRIPTION PRICE

\$184 ORCHESTRA / \$168 BALCONY

All prices include a \$1 per ticket historic preservation fee.

SHELDON

Rhythm & Jazz

ALL SHOWS AT 8 PM

Welcomed by 88.7 The Sound

Rhythm & Jazz is sponsored by



NOV 22, 2024

Joshua Redman featuring Gabrielle Cavassa

Joshua Redman is one of the most acclaimed and charismatic jazz artists to have emerged in the 1990s. Redman has worked and played with a vast array of jazz luminaries, released over 20 albums, and has garnered top honors in critics and readers polls of *DownBeat*, *Jazz Times*, *The Village Voice* and *Rolling Stone*. A Harvard grad, Redman has eight GRAMMY nominations.

Gabrielle Cavassa is an American vocalist-composer of Italian descent. She won the International Sarah Vaughan Jazz Vocal Competition in 2021 after the independent release of her critically acclaimed debut album. Cavassa is featured on Redman's inaugural album, "Where Are We."

\$56 ORCHESTRA / \$51 BALCONY 1 / \$46 BALCONY 2 / \$15 STUDENT



Martin, Cohen & Lubambo: Sounds of Brazil

Acclaimed jazz pianist and composer and St. Louis favorite Peter Martin returns to the Sheldon, sharing the stage with clarinetist-saxophonist Anat Cohen and Brazilian jazz guitarist Romero Lubambo for "Sounds of Brazil." The perennial winner of multiple "Clarinetist of the Year" titles, Anat Cohen has been a force on the jazz scene for two decades. Romero Lubambo's guitar playing unites the styles and rhythms of his native Brazilian musical heritage with American jazz tradition to form a distinctive new sound. He has established himself as a composer and performer on his own critically acclaimed recording projects as well as on those of Trio Da Paz, a GRAMMY-nominated Brazilian jazz trio.

\$51 ORCHESTRA / \$46 BALCONY 1 / \$41 BALCONY 2 / \$15 STUDENT



Bria Skonberg

Described as "one of the most versatile and imposing musicians of her generation" by The Wall Street Journal, Bria Skonberg has performed with Jon Batiste, Wycliffe Gordon, Steven Bernstein, U2 & Sun Ra Arkestra, The American Pops and Vancouver Symphony Orchestras, The Blacksmiths "We Insist" Band, and more. The "shining hope of hot jazz" (NY Times) has been at the forefront of a revival of classic American music as both a performer and educator, programming concerts and workshops for students of all ages.

\$51 ORCHESTRA / \$46 BALCONY 1 / \$41 BALCONY 2 / \$15 STUDENT



Jazz at Lincoln Center Presents: New Orleans Songbook

Jazz at Lincoln Center Presents brings the soul of New Orleans and the spirit of Mardi Gras to this amazing evening, celebrating the composers and inspired songs of the Crescent City, the historic epicenter of jazz. From Jelly Roll Morton and Louis Armstrong to Ellis Marsalis, New Orleans has long been an apex inspiration. With world-class musicians and infectious energy, New Orleans Songbook immerses audiences in the captivating and timeless spirit of this vibrant city.

\$51 ORCHESTRA / \$46 BALCONY 1 / \$41 BALCONY 2 / \$15 STUDENT

SUBSCRIPTION PRICE

\$196.25 ————— ORCHESTRA

\$175 ————— BALCONY 1

\$153.75 ————— BALCONY 2

All prices include a \$1 per ticket historic preservation fee.

SLSO Live

AT THE SHELDON

Join us for St. Louis Symphony Orchestra: Live at The Sheldon, a chamber series curated and performed by St. Louis Symphony Orchestra musicians. Experience new and treasured repertoire masterfully brought to life on The Sheldon stage in a dynamic lineup of instruments and players.

SLSO: Live At The Sheldon is sponsored by the Sinquefeld Charitable Foundation and welcomed by Classic 107.3

THURSDAYS AT 7:30 PM

OCT 10, 2024

Strings

Curated by Erin Schreiber, Associate
Concertmaster and Shawn Weil, Violin

DEC 5, 2024

Brass

Curated by Steven Franklin, Principal
Trumpet and Amanda Stewart,
Associate Principal Trombone

JAN 30, 2025

Strings with Winds

Curated by Xiaoxiao Qiang and Tzuying Huang

MAR 6, 2025

Strings

Curated by Melissa Brooks and
Celeste Golden Andrews

APR 24, 2025

Oboe and Piano

Curated by Peter Henderson and Jelena Dirks

SINGLE TICKETS

\$46 ORCHESTRA / \$41 BALCONY 1 / \$36 BALCONY 2 / \$10 STUDENT



MADE POSSIBLE BY

WHITAKER FOUNDATION

This series is not offered for subscription but individually, these shows may be part of a "Choose Your Own" series. See page 12 for details.

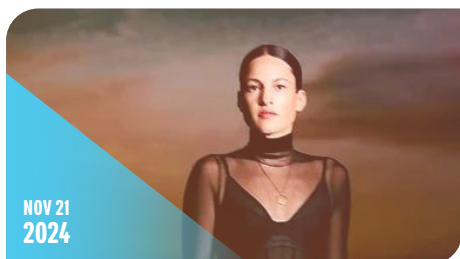
All prices include a \$1 per ticket historic preservation fee.

WHITAKER

World Music Concerts

ALL SHOWS AT 8 PM

Thanks to a generous grant from the Whitaker Foundation, The Sheldon is pleased to bring the best music from around the globe directly to The Sheldon stage. Join us one hour before each concert for a pre-concert Curtain Talk to learn more about the music and traditions of these culturally rich regions.



Carminho

Daughter of the renowned fado singer Teresa Siqueira, Carminho was most recently featured in the 2023 OSCAR-nominated film "Poor Things." Carminho was born in the middle of guitars and fado voices, having marked her debut singing in public at the age of 12, at Coliseu dos Recreios (Lisbon). She has recorded six albums, with her latest album "Portuguesa" being nominated for a Latin GRAMMY for Best Portuguese Language Roots Album. Throughout her career, Carmino has been known for her remarkable voice, talent, songwriting, and unwavering artistic dedication.

\$41 ORCHESTRA / \$36 BALCONY 1 / \$31 BALCONY 2 / \$15 STUDENT



Sona Jobarteh

The spirit of Sona Jobarteh's musical work stands on the mighty shoulders of The West African Griot Tradition; she is a living archive of the Gambian people. With one ear on the family's historic reputation, one on the all-important future legacy and her heart in both places, she is preparing a place today for the next generation. Her singing and Kora playing while fronting her band, spring directly from this tradition.

\$41 ORCHESTRA / \$36 BALCONY 1 / \$31 BALCONY 2 / \$15 STUDENT

OCT 25, 2024

Lila Downs

Winner of six Latin GRAMMYS and one GRAMMY, Lila Downs's singing transcends all language barriers. As the daughter of a Mixtec Indigenous woman and Anglo-American father, she has written narratives of Indigenous resistance protecting the original vision of the sacred plants and food of her Oaxacan culture while keeping the traditions of the American continent. Lila Downs's music embraces influences from the folkloric and ranchera music of Mexico to the music of the southern United States, crossing barriers and generating sounds that go from Folk, Jazz, Folkloric Blues, Indigena, and ranchera to Hip Hop.

\$46 ORCHESTRA / \$41 BALCONY 1 / \$36 BALCONY 2 / \$15 STUDENT



SUBSCRIPTION PRICE

\$95 ORCHESTRA / \$80 BALCONY

Subscriptions offered for Tuesday concerts only.

All prices include a \$1 per ticket historic preservation fee.

SHELDON

Coffee Concerts

Enjoy complimentary coffee and pastries at 9 a.m. in the Konneker room, just before these one-hour concerts at 10 a.m. in the historic Sheldon Concert Hall.

MAY 6 & 7, 2025

Pop! Pop! Pop!

Pianist and composer Adam Maness leads his new dynamic modern string orchestra Pop! Pop! Pop! as they return to The Sheldon as part of The Sheldon's Coffee Concert series. Mixing lush orchestration with modern arranging techniques, Pop! Pop! Pop! aims to celebrate the beauty and diversity of the popular song. This joyful collection of musicians never stops seeking out new ways of exploring the timeless songs that make up their shared musical identity.

\$25 ORCHESTRA / \$22 BALCONY





OCT 8 & 9
2024

Eleanor & Dario

Charismatic husband and wife duo Eleanor Dubinsky and Dario Acosta Teich transport audiences to Latin America and around the world with their fresh interpretations of Latin, jazz, French, pop and original songs. Eleanor is a U.S.-born vocalist and multi-instrumentalist whose musical roots are in classical cello. Dario is a virtuoso guitarist from Tucumán, Argentina, a South American center of folk music and indigenous culture. Together, the artists inspire with performances that transcend genre and geography.

\$25 ORCHESTRA / \$22 BALCONY



NOV 5 & 6
2024

Elsie Parker & The Poor People of Paris

Elsie Parker and "The Poor People of Paris" return to The Sheldon to bring you a variety of French popular music and jazz. Elsie's woodwind playing (clarinet/flute/tenor sax) is influenced by works of French composer Michel Legrand, and Argentinian tenor saxophonist/composer Gato Barbieri. Elsie is featured at numerous venues in the St. Louis area including The Missouri Botanical Gardens Whittaker Concert Series, The Missouri History Museum and Powell Hall. As a vocal soloist with symphony orchestras, Elsie Parker has performed with multiple orchestras.

\$25 ORCHESTRA / \$22 BALCONY



DEC 10 & 11
2024

The Wee Heavies

Consisting of Aaron Schiltz, Peter Merideth, Jay Harkey and Steve Neale, the mostly a cappella band The Wee Heavies has won a following with their mix of Scottish, Irish and American folk music that combines tradition with innovation and weaves together a unique take on the songs they sing. With their voices (and occasional instrumental accompaniment) the Heavies create a sound rich in harmony with unexpected twists and an energy that has their audiences clapping, stomping, and singing along.

\$25 ORCHESTRA / \$22 BALCONY



APR 15 & 16
2025

The Bosman Twins

Born in St. Louis, Dwayne and Dwight Bosman started performing professionally as The Bosman Twins at age 14. Over the years, they have shared their love of music and the stage with entertainment legends Freddie Cole, Branford Marsalis, Fontella Bass, and the late trumpeter, Lester Bowie. Whether performing with their own band or accompanying other notable jazz professionals, their unique style and renditions of jazz, rhythm and blues, funk and gospel have earned them national and international acclaim.

\$25 ORCHESTRA / \$22 BALCONY

Choose Your Own Series

AND SAVE ON SINGLE TICKET PRICES

Choose three or more concerts from the Sheldon Rhythm & Jazz, Sheldon Folk, Sheldon Classics or Whitaker World Music Concerts Series and get a 5% discount off of single ticket prices!

Enjoy great subscriber benefits including:

- **Preferred Seating***
- **Advance notice** and special pre-sales for additional Sheldon events added throughout the season
- **Get the opportunity** to purchase single tickets prior to public sale
- **Free replacement tickets** for lost or forgotten tickets

Just choose three or more concerts from the Jazz, Folk or Whitaker Series and subtract 5% from the single ticket prices.

Example:

Suzanne Vega	2 ORCHESTRA TICKETS @ \$56 = \$112
Bria Skonberg	2 ORCHESTRA TICKETS @ \$51 = \$102
Lila Downs	2 ORCHESTRA TICKETS @ \$46 = \$92
TOTAL	\$306 - 5% (OR MULTIPLY TOTAL BY .95) = \$290.70



Available for a limited time. Order by **Aug. 9, 2024!**
Mail in the attached order form, call The Sheldon at **314.533.9900**
or order online at **metrotix.com/sheldonsub**.

*Ticket locations will vary for each concert. Best available tickets will be assigned on a first come, first served basis. Seating for Choose Your Own packages will be assigned beginning August 9, 2024.

There's Even More to The Sheldon



Education Programs

From engaging live performances to youth ensembles and STEAM-based initiatives combining music and art, The Sheldon's acclaimed educational programs are accessible and welcoming to all traditional and home schools. Visit TheSheldon.org/education to learn more!



The Sheldon Art Galleries

The galleries feature multiple exhibit spaces dedicated to a diverse range of changing exhibitions of architecture, music and sound, photography, local and regional artists and collections, and children's art.

Visit TheSheldon.org/our-galleries for exhibitions and hours.



Plan Your Event

The wedding of your dreams and beyond. A corporate event that feels like anything but. No matter the occasion, our venue rentals are designed to inspire. To learn more, call The Sheldon's Director of Events at 314.533.9900 or visit TheSheldon.org/venue-rentals.

Subscription Order Form

2024-2025

NAME

ADDRESS

CITY/STATE/ZIP

DAY PHONE

EVENING PHONE

EMAIL

SUBSCRIPTIONS		# OF TICKETS	\$ TOTAL
SHELDON RHYTHM & JAZZ	4 CONCERTS ON SATURDAYS AT 8 PM		
Orchestra Level	\$215		
Balcony Level	\$195		
SHELDON FOLK	5 CONCERTS ON FRIDAYS AT 8 PM		
Orchestra Level	\$215		
Balcony Level	\$195		
SLSO LIVE	5 CONCERTS ON THURSDAYS AT 7:30 PM		
Orchestra Level	\$196.25		
Balcony 1 Level	\$175		
Balcony 2 Level	\$153.75		
COFFEE CONCERTS	5 CONCERTS ON TUESDAYS AT 10 AM		
Orchestra Level	\$95		
Balcony Level	\$80		
CHOOSE YOUR OWN	(Choose three or more from Jazz, Folk, Classics or Whitaker series. Add single ticket prices together and subtract 5% from total price or multiply total by .95)		
Concert 1			
Concert 2			
Concert 3			
(Payment plan available for subscription packages only, not available for CYO or single ticket purchases)		SUBSCRIPTION TOTAL	\$
<input type="checkbox"/> Check box to pay 50% of subscription fee now/50% on June 15		HANDLING FEE	\$8.00
		GRAND TOTAL	\$

MAIL TO

The Sheldon
Attn: Box Office
3648 Washington Blvd.
St. Louis, MO 63108

PAYMENT INFO

CARD #

EXP.

SIGNATURE

☐ Check

☐ Credit Card

CCV/CID

3 DIGITS ON BACK | 4 DIGITS ON FRONT OF AMEX

Subscribe & Be Part of this Exciting Season

NEW SUBSCRIPTION SALES BEGIN **MAY 24, 2024** AT 10 AM

Choose Your Own Subscriptions assigned beginning August 9, 2024 at 10 am

Online Order

Order online at metrotix.com/sheldonsub.

Mail Order

Complete the attached order form and enclose your credit card number or check made payable to The Sheldon.

Phone Order

Call MetroTix to place your phone order **314.534.1111**

Subscribers are given preferential seating and subscriptions are filled in the order received.

Sorry, there are no refunds.

Programs and dates are subject to change.

Single Ticket Sales

Aug. 9, 2024 at 10 AM

Visit metrotix.com for single ticket sales.

All tickets are subject to a \$1 historic preservation fee that will help The Sheldon maintain this historic gem for generations to come!

Special Needs

The Sheldon is accessible to people with disabilities. Patrons with special needs can purchase tickets via MetroTix at 314.534.1111, The Sheldon at 314.533.9900 or online at **TheSheldon.org**. To arrange for accessible parking, please call The Sheldon at 314.533.9900.

Gift Cards

Sheldon Gift Cards are available for purchase online at **MetroTix.com** or by phone with MetroTix at 314.534.1111.

Parking & Transportation

Ample parking is available in parking lots and the Fox Theatre parking garage, adjacent to and across the street from The Sheldon. Street parking is free after 7 PM and on Sundays.

MetroLink to the Grand Boulevard station and MetroBus 10 or 70 Grand and Lindell or MetroBus 97 to Delmar and Grand provide the best access via public transportation.

The Sheldon's concert series is supported by Regional Arts Commission and the Missouri Arts Council, a state agency.

Subscribe Now & Save

Call 314.534.1111 or visit metrotix.com/sheldonsub



3648 WASHINGTON BOULEVARD
ST. LOUIS, MO 63108

Connect with us

TheSheldon.org



@thesheldon



@sheldonstl



@sheldonstl



Missouri Arts Council
The State of the Arts



U.S. POSTAGE PAID
NON-PROFIT ORG.
ST. LOUIS, MO
PERMIT NO. 53