

Financial Data

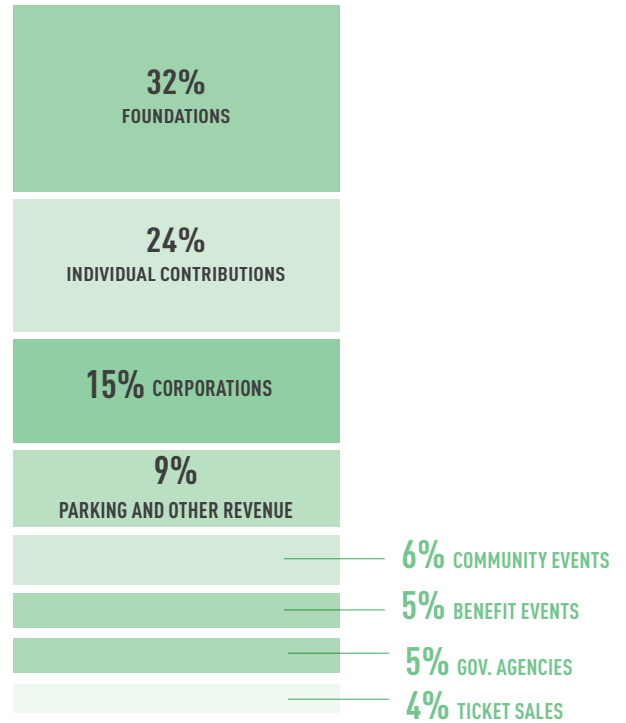
BALANCE SHEET

CURRENT ASSETS		6/30/2021
Cash	\$	4,267,961
Investments	\$	1,672,883
Receivables	\$	326,375
Promises To Give (Short Term)	\$	568,579
Inventory	\$	63,838
Prepaid Expenses	\$	50,021
TOTAL CURRENT ASSETS	\$	6,949,657
Property and Equipment (Net)	\$	11,482,445
Promises To Give - (Long Term)	\$	402,071
Assets Restricted for Permanent Investment	\$	1,056,690
TOTAL ASSETS	\$	19,890,863
CURRENT LIABILITIES		
Current maturities of long-term debt	\$	160,476
Payables & Accrued	\$	164,336
Advance Deposits & Deferred Revenue	\$	334,036
TOTAL CURRENT LIABILITIES	\$	658,848
Long-Term Debt	\$	1,139,305
TOTAL LIABILITIES	\$	1,798,153
NET ASSETS		
Without Donor Restrictions	\$	12,412,836
With Donor Restrictions	\$	5,679,874
TOTAL NET ASSETS	\$	18,092,710
TOTAL LIABILITIES AND NET ASSETS	\$	19,890,863

INCOME & EXPENSE STATEMENT

INCOME		6/30/2019
Ticket Sales	\$	76,907
Individual Contributions	\$	483,117
Benefit Events	\$	96,180
Foundations	\$	648,389
Corporations	\$	292,117
Government / Agencies	\$	107,648
Community Events	\$	122,005
Parking & Other	\$	178,858
Other Income (incl CARES Act funding)	\$	533,582
Net Assets released from restrictions	\$	1,677,831
TOTAL INCOME	\$	4,216,632
EXPENSES*		
Sheldon Programs	\$	2,820,296
Administration	\$	1,015,586
Development	\$	373,608
*Note - Expenses include loss on disposal of property		
TOTAL EXPENSES	\$	4,209,490
INCREASE (DECREASE) IN NET ASSETS	\$	7,142

REVENUE



EXPENSES

